

# **PTA-8500A**

## **High Speed Smart Card Personalization Machine**

# PTA-8500A

## High Speed Smart Card Personalization Machine

Innovation of Smart Card Personalization Speed  
Most advanced laser marking technology in the world

### Overview

---

PTA-8500A personalization machine is undoubtedly the best choice of global smart card manufacturers by virtue of its excellent stability, strong expansibility and high speed laser-marking technology. Unique patented laser marking technology realizes non-stop laser marking so as to improve efficiency to the maximum extent. Max. throughput of PTA-8500A is up to 6000cph. Automatic card loading/unloading, card contact/contactless encoding, double-sided laser engraving and card re-perso online functions are intergrated to realize sequential card output without human intervention.

### Advantages

---



#### The Highest Speed of Laser Marking in The World

It adopts global unique patented laser marking technology. The throughput is up to 6000cph when one laser is equipped with marking time not more than 0.6s for one side or two lasers are equipped with marking time not more than 1.2s for one side.



#### High Speed and Stable IC Personalization

32 encoding stations are equipped as standard configuration, which can be extended to 64 stations to meet the demand of big data size of chip production; Static perso stations and readers stay static during electrical perso process to ensure stable data transmission and encoding.



#### High-performance Reader

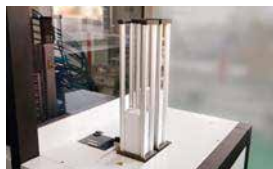
It is equipped with the top industrial-class reader developed by Piotec, which can test open/short circuit with stability and high cost-performance.



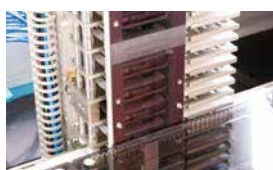
#### High Data Security

Special double authentication are necessary for sensitive and crucial operation; Customers can carry out secondary development for data analysis and processing by reader SDK.

## Configurations



Input/Output



Contact IC Perso



Laser Marking



OCR Checking

### ► Input/Output Module

Two removable magazines for each module can be switched automatically and the maximum capacity is up to 500pcs for each magazine.

### ► Contact IC Perso Module

Equipped with 32 contact IC perso stations for standard, which can be extended to 64 stations to encode ISO card, 2in1 card and 4in1 card.

### ► Flipper Module

3 sets, 2 of them are used for card double sides marking and the another for card output orientation selection.

### ► Laser Marking Module

Equipped with 2 sets of 50W fiber lasers and combined with Piotec's unique patented technology for high speed laser marking, card is automatically positioned and laser engraves non-stop so as to realize real double laser engraving.

### ► Contactless IC Perso Module(Optional)

Equipped with 16 contactless IC Perso stations and Piotec's industrial-class contactless reader.

### ► OCR Checking Module(Optional)

Equipped with 1 OCR checking module for standard to read and verify the information of card surface.

## Throughput Table

IC Encoding Throughput Table (Unit: pcs/h)

Configuration \ PersoTime (S)	17	18	20	25	35	40
32 Stations	6000	5700	5200	4200	3000	2700
Configuration \ PersoTime (S)	9	10	12	15	18	20
16 Stations	5650	4800	4100	3300	2800	2500

High Speed Laser Marking Throughput Table (Unit: pcs/h)

Configuration \ Marking Time (S)	1	1.4	1.6	1.8	2	2.2
High Speed Laser Marking	6000	4500	4100	3700	3300	2900

Remark: The above throughput is achieved with 2 lasers equipped.

## Technical Specification

Name	Parameters
Dimension	3600mm X 910mm X 1900mm
Weight	800kg
Power Supply	220V ( -5%~+10% ) , 50Hz, 6KW
Noise	< 65dB
Operation Temperature	23°C±3°C
Operation Humidity	50±10%
Compressed Air	Pressure: 0.5Mpa Flow: 400L/min
Communication Interface	Ethernet
MaximumThroughput	6000cph

## Shenyang Piotec Technology Co., LTD.

Add: No.37, Shiji Rd, Hunnan District, shenyang, China

Tel: +86-024-23783416 • Fax: +86-024-23783285 • Website: [www.piotec.cn](http://www.piotec.cn)